



A **VONTIER** COMPANY

AtlasX

Next-Gen Commercial Refueling

9100G Mechanical High Flow Pumps and Dispensers

Introducing AtlasX 9100G series. This state of art mechanical dispenser is built to withstand heavy use and harsh environments.

The AtlasX mechanical series is a reliable and efficient solution for your fueling needs. With its proven performance and durability, the AtlasX 9100G next generation will enhance your fueling experience.

The AtlasX mechanical dispenser features a user-friendly interface and intuitive controls, making it easy for anyone to operate. The taller, sleeker, modern designer has improved consumer ergonomics.

AtlasX 9100G is compatible with various fuel types and can be easily integrated into your business.

P-2855



Model number	Description	Type	Hoses	Products	Register	Flow rating
9153G	Single Pump	Pump	1	1	Mech	22 gpm
9153GTW1M	Twin Pump	Pump	2	1	Mech	22 gpm
9153GTW2	Twin Pump	Pump	2	2	Mech	22 gpm
9153GX	Single Dispenser	Dispenser	1	1	Mech	22 gpm
9153GXTW1	Twin Dispenser	Dispenser	2	1	Mech	22 gpm
9153GXTW2	Twin Dispenser	Dispenser	2	2	Mech	22 gpm

Feature	Description	9153G
Approvals	Safety, UL and cUL Listed W&M, NCWM, Measurement Canada (MC)	S S
Working Pressure	50 psi maximum	S
Unit of Measure	Gallons (Liters optional)	S
Filters	Internal spin-on style External canister type	S O
Piping	Internal fuel piping	1"
Discharge	Hose connection-NPT	1"
Satellite Piping	Satellite piping connection(s) – dispensers only	O
Inlet	Island connection-NPT	1 1/2"
Junction Box	Field wiring junction box	S
Housing	G30 Galvanized steel	13GA
Panels/Sheathing	Lockable removeable-precoated aluminum 2mm thick Lockable removable – stainless steel – 22 gauge	S O
Motor/Voltages	1HP 115/230 VAC, 60HZ 1HP 115/230 VAC, 50HZ	S O
Meter	Gilbarco 4 piston PD CFT meter	S
Calibration	Mechanical	S
Pump Models	GPU + gear pump Hand Crank	S O
Solenoid Valve	2 stage valve for preset operations (PP)	1"
Pulsers	100:1 gallon volume; 10:1 gallon volume; 1:1 gallon volume	O
Register	VR-10 4 wheel non-computer gallons or liters to 999.9 Power reset	S S
Brand Panel	Lighted	O
Totalizer	Mechanical Totalizer	S

Operating Environment

Environment	Range	
Relative humidity	20% to 95% non-condensing	S
Electronics Minimum Ambient Temperature	-22°F (-30° C)	S
Electronics Maximum Ambient Temperature	131°F (55° C)	S
Hydraulics Minimum Ambient Temperature	29°C (-20°F)	S
Hydraulics Maximum Ambient Temperature	52°C (125° F)	S



1 Year Warranty

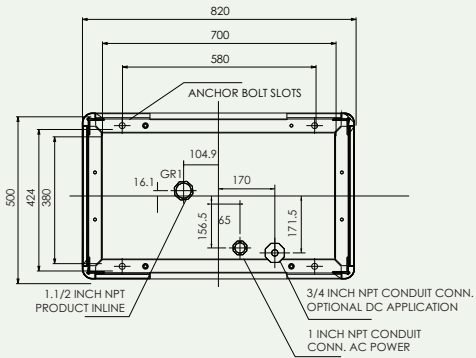
Commercial and Retail Pumps and Dispensers are warranted against defects in material and workmanship for 12 months from date of installation or 24 months from date of original invoice, whichever occurs first. The PRIME factory installed fuel management system electronics are also warranted against defects in material and workmanship for 12 months from date of installation or 24 months from date of original invoice. Warranty coverage for AtlasX and AtlasX PRIME includes parts and labor. Field-installed kits are warranted against defects in material and workmanship for 12 months from date of installation or 24 months from date of original invoice, whichever occurs first. The warranty coverage is for parts only.

S = Standard
O = Optional
- = Not available

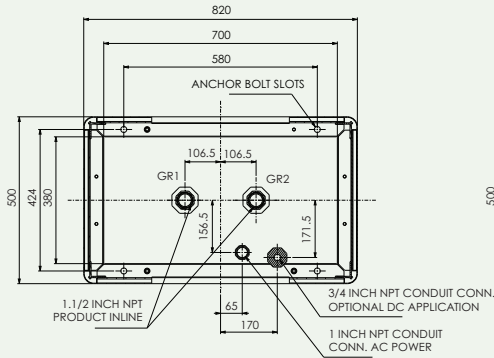
Technical Specification and Foundation Layout

(Measurements in mm)

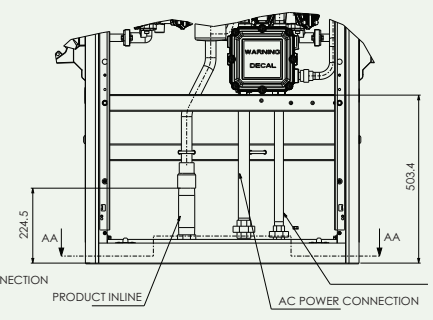
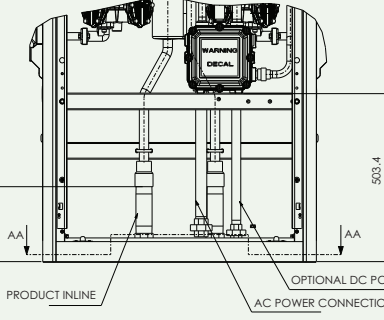
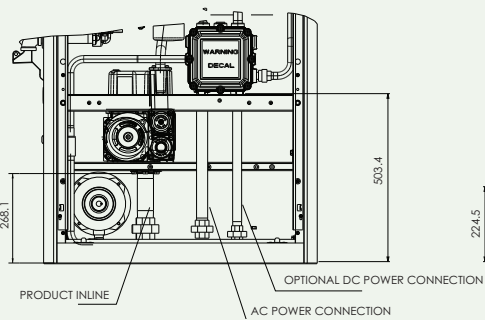
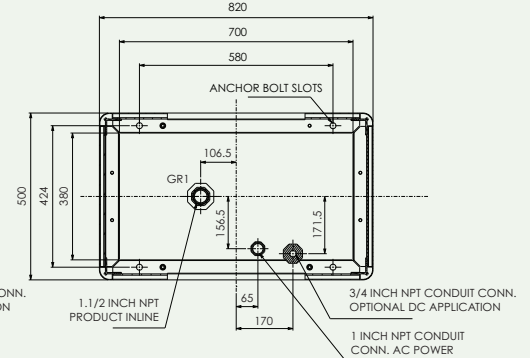
9153G



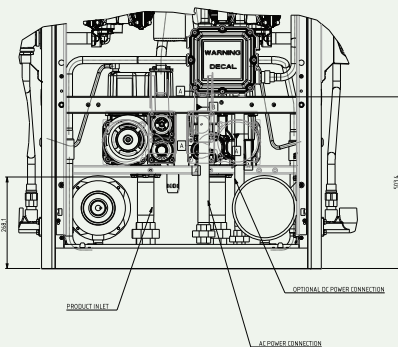
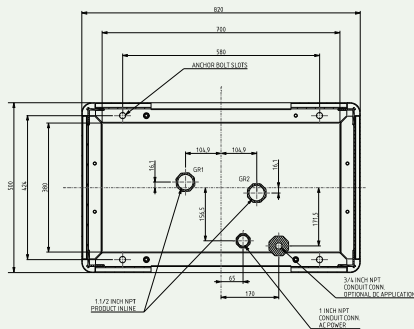
9153GXTW2



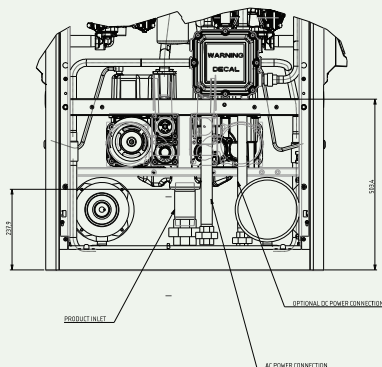
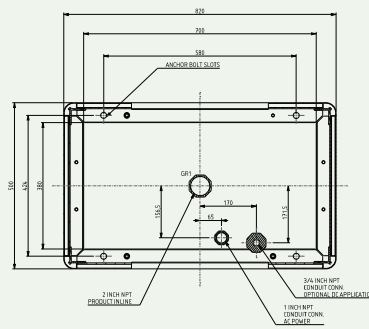
9153GX / 9153GXTW1



9153GTW2



9153GTW1M



AtlasX Key Enhancements



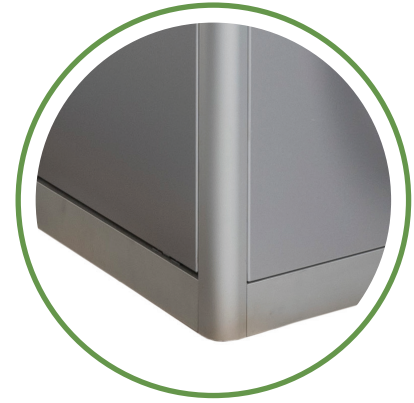
Best-in-class engineering

Accurate fuel dispensing—designed with precise measurement mechanisms and flow control features to prevent fuel loss.



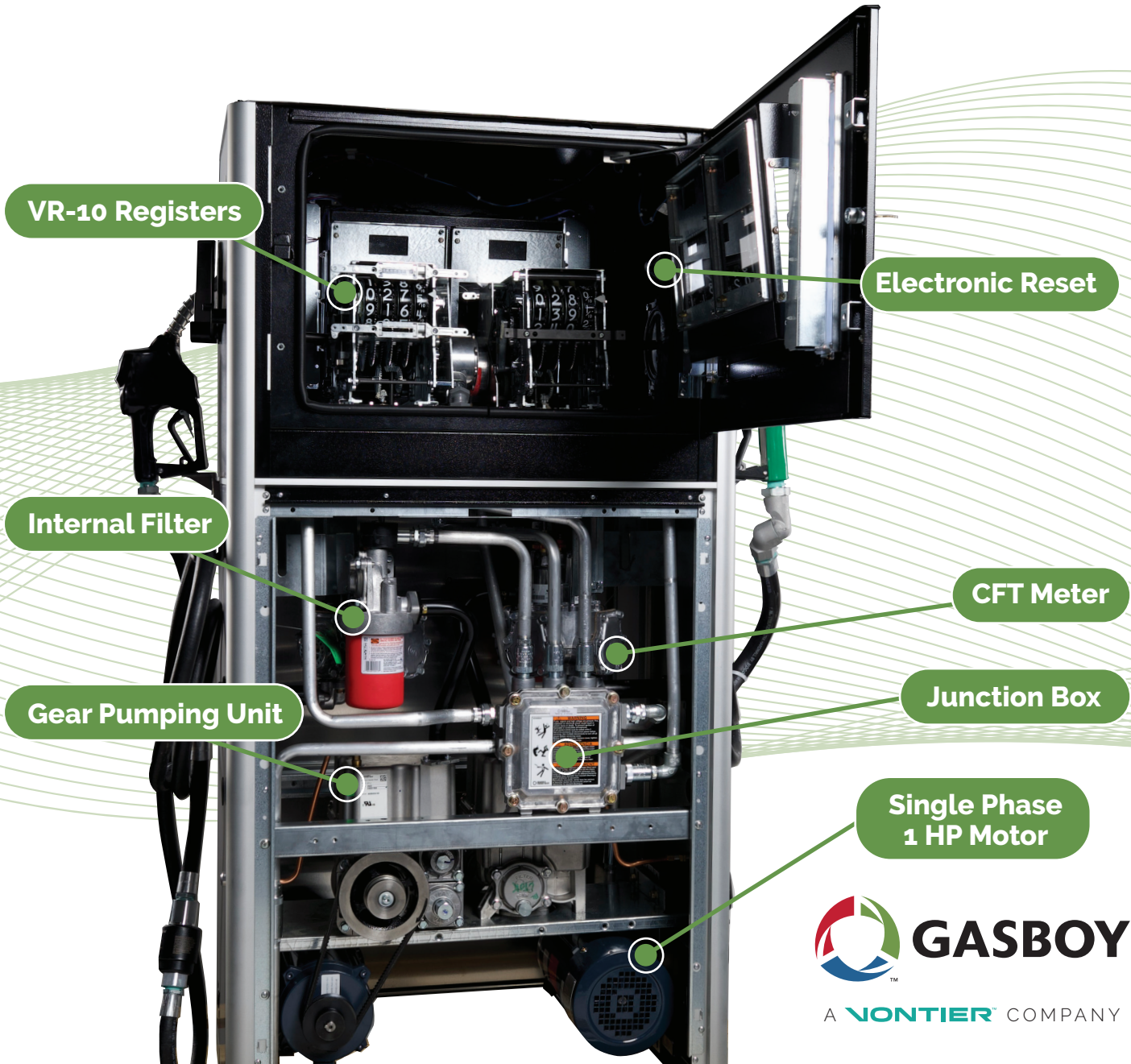
Versatile solution with reliable durability

Increased visibility with choice of LED Strip backlighting for Product ID and bezel face. LED backlit gallon displays.



Easy serviceability to increase uptime

Easy, access maintenance panels and large hydraulic frame provides access to 4 sides of the unit. Easy to maintain, quick to perform service.



A VONTIER COMPANY