



WESTERN
— PUMP —

3235 F STREET | SAN DIEGO, CA 92102
720 S. ROCHESTER AVE. | ONTARIO, CA 91761
1438 E. VAN BUREN | PHOENIX, AZ 85006
(888) 239-9988
www.westernpump.com

STATEMENT of QUALIFICATIONS

FUELING FACILITIES | VEHICLE MAINTENANCE & REPAIR FACILITIES | C-STORES

TABLE OF CONTENTS

OVERVIEW

EXECUTIVE SUMMARY	PAGE 3
CAPABILITIES	PAGE 4
General Construction Services	PAGE 5
Specialty Construction Services	PAGE 6
Compliance and Maintenance Services	PAGE 7
Equipment Distribution	PAGE 8
MANAGEMENT	PAGE 9
ORGANIZATION	PAGE 10
DOEHRMAN, A WESTERN PUMP COMPANY	PAGE 11
DOEHRMAN SERVICES	PAGE 12

KEY PERSONNEL

Resume - Ryan Rethmeier, President	PAGE 13
Resume - Michael Mizicko, Vice President of Operations	PAGE 14
Resume - Ryan Shadburn, Vice President of Business Development	PAGE 15
Resume - Derek Rethmeier, Vice President/Pre Construction	PAGE 16
Resume - Daniel Miller, Construction Superintendent	PAGE 17
Resume - John Hendrick, Business Development	PAGE 18
Resume - Greg McLucas, Project Manager	PAGE 19
Resume - Norma Soto, Project Manager	PAGE 20
Resume - Matthew Bodde, Project Manager/Estimator	PAGE 21
Resume - Gregory Lambright, Architect/Engineer	PAGE 22

PROJECT EXPERIENCE

Relevant Project Experience - Twentynine Palms Marine Mart	PAGE 23
Relevant Project Experience - Love's #749 Westmorland, Ca	PAGE 24
Relevant Project Experience - Sycuan Market	PAGE 25
Relevant Project Experience - SDIA Rental Car Center	PAGE 26
Relevant Project Experience - USMC Camp Pendleton Design / Build Fuel Facilities	PAGE 27
Relevant Project Experience - Ocotillo Marine Mart	PAGE 28
Relevant Project Experience - Pilot Flying J Travel Center	PAGE 29
Relevant Project Experience - Chollas Creek Quaywall	PAGE 30
Relevant Project Experience - Deluxe Auto Carriers, Inc.	PAGE 31
Relevant Project Experience - Metro Division 13 Bus Maintenance Facility	PAGE 32
Relevant Project Experience - Brown Field Border Patrol Station	PAGE 33
Relevant Project Experience - Legoland Fuel Facility	PAGE 34
Relevant Project Experience - SeaWorld Maintenance Facility	PAGE 35
Relevant Project Experience - Love's Travel Stops & Country Store (Bliss, ID)	PAGE 36
Relevant Project Experience - QuickTrip 489	PAGE 37

EXECUTIVE SUMMARY

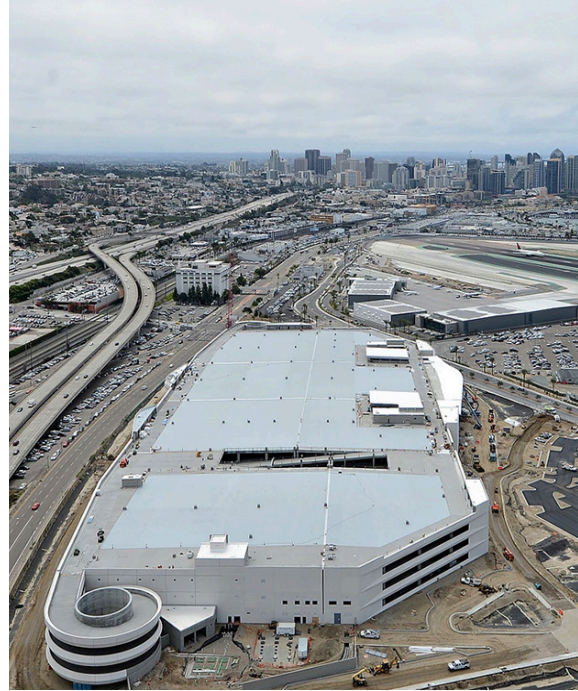
Western Pump is a general and specialty contractor serving the petroleum and transportation industries, and mission critical infrastructure. Over the past eight decades, Western Pump has built a reputation as a single-source solution. We complete quality projects on time and within budget while providing unsurpassed services. Our expert teams are equipped with the required resources to build cost-effective projects while meeting demanding schedules and limited budgets. Western Pump's staff of professionals has a proven track record for delivering quality, reliability, exceptional customer service, reduced downtime, and peace of mind.

We utilize state-of-the-art computer technologies in all areas of business, including estimating, project management, service management, fleet management, content and process management, workflow management, customer relationship management, computer-aided design, building information modeling, and more. These technologies, along with a dedicated team of professionals, are applied carefully toward the successful execution and completion of a wide variety of construction projects and service contracts.

Western Pump is highly selective regarding the type of projects and contracts that it undertakes. The substantial capabilities of the firm, coupled with the experienced technical and managerial skills of its staff, enable Western Pump to meet and exceed its clients' expectations. The combined goals and objectives of our clients are checked and balanced against our current workloads and resources - we will not take on projects or contracts unless we can deliver on our promise. Customer expectations, budgets, and schedule limitations are also taken into consideration. This approach ensures the highest quality of service, the timely completion of projects, and constant and focused response to our clients.

Western Pump is a full-service contractor for the petroleum, automotive, and transportation industries, specializing in the construction and service of all types of fueling facilities, convenience stores, and vehicle maintenance/repair facilities. Western Pump has provided construction and services to governmental agencies, private developers, major corporations, educational organizations, and to other general contracting firms. Western Pump has a demonstrated history of providing consistent, cost effective, and accurate service and performance with both private and public sector projects and contracts.

Through our experience, expertise, and resources, Western Pump can provide a wide array of services that fosters the growth, prosperity, and success of our clients.



CAPABILITIES

The Power and Resources to Get the Job Done

CONSTRUCTION

Western Pump provides a wide range of both specialty and general construction services, from short duration, self-performed heavy repairs to the complete, ground-up construction of a new facility requiring a team of subcontractors. No project is too small or too big. Our project management and execution teams have the experience and expertise necessary to execute the work on time and within budget.

SERVICE

Western Pump self-performs maintenance, repairs, and compliance services on fuel systems and vehicle maintenance equipment throughout Arizona and Southern and Central California. Over 50 ICC- and manufacturer-certified service technicians are dispatched out of three office locations (San Diego, Los Angeles, and Phoenix). These technicians carry a wide range of repair parts on the trucks to deliver the quickest possible repair times. Western Pump is one of the only service providers capable of effectively servicing a geographic territory spanning over 150,000 square miles. Our technicians perform everything from preventative/ routine maintenance services to emergency repairs, compliance testing, monthly inspections, and complex troubleshooting of mechanical, electrical, and electronics systems.

EQUIPMENT & PARTS SALES

Western Pump is a direct wholesale distributor for many product lines of petroleum, convenience store, automotive, and industrial equipment. We represent over 150 of the industry's best manufacturers. Our warehouses in San Diego, Los Angeles, and Phoenix carry over \$2M in inventory. Our parts and equipment sales team have in-depth product knowledge and are trained to help our clients identify and select the right equipment/parts for their application.

GROUND-UP CONSTRUCTION & REMODELS

- ✓ Service Stations
- ✓ Truck Stops
- ✓ C-Stores
- ✓ Commercial Fueling Facilities
- ✓ Mission Critical Facilities
- ✓ Vehicle Maintenance Facilities
- ✓ Marina Fuel Facilities
- ✓ Aircraft Refueling Facilities
- ✓ Bulk Terminals
- ✓ Auto Repair Shops
- ✓ Automobile Dealerships
- ✓ Quick Lubes
- ✓ Car Washes
- ✓ Compressed Natural Gas (CNG) Facilities

HEADQUARTERS – SAN DIEGO

3235 F Street San Diego, CA 92102

BRANCH OFFICE – LOS ANGELES

720 S. Rochester Ave., Ste. C, Ontario, CA 91761

BRANCH OFFICE - PHOENIX

1438 E. Van Buren, Phoenix, AZ 85006

CONTACT INFORMATION

Telephone: (619) 239-9988 Fax: (619) 239-9925
www.westernpump.com

DEPARTMENTS

CONSTRUCTION: ext. 213

SERVICE: ext. 205

PARTS: ext. 219

ESTIMATING: ext. 241

HUMAN RESOURCES: ext. 235

ACCOUNTING: ext. 212

SHIPPING/RECEIVING: ext. 233

HOURS of OPERATION

Monday - Friday
7:30am to 4:30pm

FEDERAL TAX ID:

33-0312706



WESTERN
— PUMP —

SERVICES

General Construction Services Offered

GENERAL CONSTRUCTION DELIVERY METHODS

CONSTRUCTION MANAGEMENT – We manage the process of estimating, bidding, contracting, and constructing a project according to the plans and specifications supplied by the owner. This allows us to offer the best value to the owner while minimizing the potential for adversarial positioning. We offer two types of delivery methods:

✓ Total construction cost plus a percent-of-total-cost fee, without a maximum cap: This is the preferred delivery method if the plans and specifications supplied by the owner are not complete or are in a state of flux.

✓ Total construction plus a percent-of-total-cost fee, with a maximum cap: This method should only be considered when the plans and specifications supplied by the owner are complete, with very little possibility of change.

INTEGRATED CONSTRUCTION MANAGEMENT – We assist with selecting an architect who is contracted to the owner; our management process then encompasses everything from initial design through the completion of construction. This method involves the owner more directly in the design and construction process. This process may also preferred over our Design/Build delivery plan (see below) due to the insurability/liability protection for the owner as well as the contractor.

DESIGN/BUILD – We manage the entire project from inception through design to construction completion. This differs from Integrated Construction Management in that the architect is contracted directly to Western Pump, so we assume total accountability for the design process as well as the construction process. This method traditionally minimizes owner involvement in the design and construction process. It is most suitable for those owners who prefer a complete turnkey process.

BID/BUILD – This type of project is the least preferred and should only be considered after careful study of the project documents. Not only is there greater financial risk, this type of project also tends to create a more adversarial relationship between the parties.

CONTRACTOR LICENSES

CALIFORNIA (#673853)

A – General Engineering Contractor

B – General Building Contractor

C-10 – Electrical Contractor

C-61 – Limited Specialty Classification

D-40 – Service Station Equipment and Maintenance

HAZ – Hazardous Substance Removal Certification

ARIZONA (#ROC200394) L-05 – Commercial Service Station Equipment

NEVADA (#0057569) B4 – Service Stations

IDAHO (#RCE-52704)

MONTANA (#258330)

WASHINGTON (#WESTEPI797LJ)

BONDING

\$15,000,000 Single Project \$30,000,000 Aggregate

SURETY: Markel Surety / SureTec Insurance Company A.M Best rated A XV and Treasury listed \$40,924,000

AGENT: Michael Strahan

KPS Insurance Services, Inc.

Telephone: (858) 538-8822

INSURANCE

General Liability (\$1M/\$2M), Automobile Liability (\$1M), Pollution Liability (\$1M), Professional Liability (\$1M), Excess Liability (\$5M), Workers Compensation (\$1M), Employers Liability (\$1M)

AGENT: Carmen Scoppettuolo

Wateridge Insurance Services

Telephone: (858) 200-3084



WESTERN
— PUMP —

SERVICES

Specialty Construction Services Offered

CONSTRUCTION (Self-performed)

- ✓ Design /Engineering
- ✓ Permitting
- ✓ Demolition, Excavation, Trenching, and Shoring
- ✓ Tank Installation & Removals
- ✓ Piping System Fabrication & Installation
- ✓ Electrical Conduit & Wire Installation
- ✓ Concrete
- ✓ Fabrication & Welding
- ✓ Start-up & Initialization

VEHICLE SERVICE & GARAGE

EQUIPMENT INSTALLATION (Self-performed)

- ✓ Lubricant Pump Systems
- ✓ Fluid Inventory Control Systems
- ✓ Hose Reel Banks
- ✓ Piping Systems
- ✓ Compressed Air Systems
- ✓ Used/Waste Oil Evacuation Systems
- ✓ Light Duty Surface-mounted Vehicle Lifts
- ✓ Heavy Duty In-ground Vehicle Lifts
- ✓ Alignment Racks
- ✓ Wheel Service Equipment
- ✓ Tailpipe Exhaust Systems
- ✓ Car Washes
- ✓ Water Reclamation Systems
- ✓ Central Vacuum Systems
- ✓ Workbenches, Shelving, Parts Storage

PETROLEUM EQUIPMENT INSTALLATION (Self-performed)

- ✓ Underground Storage Tank (UST) Systems
- ✓ Aboveground Storage Tank (AST) Systems
- ✓ Fuel Dispensing Systems
- ✓ Submersible Pump Systems
- ✓ Piping Systems
- ✓ Secondary Containment Systems
- ✓ Tank & Continuous Monitoring Systems (AB-2481)
- ✓ Vapor Recovery Systems
- ✓ Fuel Management/Control Systems
- ✓ Fuel Island Canopy Structures
- ✓ Alternative Fuels Systems (E-85, Biodiesel)
- ✓ Diesel Exhaust Fluid (DEF) Systems
- ✓ Fuel Additive Systems
- ✓ Liquefied Petroleum Gas (LPG) Systems
- ✓ Fuel Oil Supply and Day Tank Systems
- ✓ Fuel Recirculating & Filtration Systems

ELECTRICAL INSTALLATION (Self-performed)

- ✓ Power Distribution & Control Systems
- ✓ Switchgear
- ✓ Conduits & Wiring Installation
- ✓ High and Low Voltage
- ✓ Explosion-proof (Class I, Division I & II)
- ✓ LED Lighting
- ✓ Electric Vehicle (EV) Charging Stations

ELECTRONICS (Self-performed)

- ✓ Point-of-Sale (POS) Systems
- ✓ Fuel Management & Control Systems

CLIENT LIST

SERVICE STATIONS

Costco Wholesale
United Pacific
Marine Corps Community Services
Navy Exchange Systems
Walmart/Sam's Club
Albertsons/Vons
Marathon/Speedway

Chevron
Thrifty Oil Company
Phillips 66
Sycuan Casino
Morongo Casino
Cahuilla Casino

TRUCK STOPS

Love's Truck Stops & Country Stores
Pilot Flying-J
Travel Centers of America (TA)
Red Earth Casino & Travel Center
Golden Acorn Casino Travel Center
Truck.Net

PRIVATE FLEETS

Anheuser-Busch
SeaWorld
Universal Studios
Paramount Pictures
Coachella Valley Water District
Walt Disney
Hawthorne Machinery

SERVICES

Compliance and Maintenance Services Offered

PETROLEUM

- ✓ Designated UST Operator (DUSTO) Inspections
- ✓ Annual Monitoring System Certifications
- ✓ Stage I & II Vapor Recovery Testing
- ✓ In-Station Diagnostics (ISD) Testing
- ✓ Tank & Line Integrity Testing
- ✓ Enhanced Leak Detection (ELD) Testing
- ✓ Meter Calibrations
- ✓ Fuel Polishing & Tank Cleaning

AUTOMOTIVE

- ✓ ALI-certified Vehicle Lift Inspections
- ✓ Compressed Air System Audits

Maintenance Services Offered

DELIVERY METHODS

- ✓ Time & Materials (T&M) / Break-fix
 - P1 Emergency 4-hour Response
 - P2 24-hour Response
 - P3 72-hour Response
 - Troubleshooting & Repair
- ✓ Scheduled Maintenance
- ✓ Fixed-Price Service Agreements (FPSAs)
- ✓ Preventative Maintenance (PM) Services
- ✓ Multiple Award Service Contracts (MASCs)
- ✓ Indefinite Delivery Indefinite Quantity (IDIQ)
- ✓ Dedicated Service Technician



CLIENT LIST

GENERAL CONTRACTORS

Austin Commercial
Sundt Construction
McCarthy Building Companies
Turner Construction
Clark Construction
Swinerton Builders
Soltek Pacific Construction
Bellingham Marine
Lusardi Construction
Tri-State General Contractors
Straub Construction
The Haskell Companies
Amoroso Construction
AECOM

OIL JOBBERS

Flyers Energy
SC Fuels
Western Refining & Marketing
SOCO Group
Dewitt Petroleum
Cosby Oil
Lee Escher Oil Company (LEOCO)
National Petroleum
Dion & Sons
Southern Counties Lubricants (SCL)
Beck Oil
Supreme Oil

HOSPITALS & CARE FACILITIES

JFK Memorial Hospital
St. Joseph's Hospitals
Children's Hospital of Orange County
VA Medical Centers
Scripps Memorial Hospitals
UCSD Medical Center
Desert Regional Medical Center

SERVICES

Equipment Distribution

EQUIPMENT SALES

Western Pump sells, installs, and services equipment from the following manufacturers:

PETROLEUM EQUIPMENT: Xerxes, Modern Welding, ConVault, Gilbarco, Veeder-Root, Red Jacket, Gasboy, Wayne, OPW, Blackmer, PetroVend, Civacon, Fibrelite, PMC, Bennett, Franklin Fueling Systems, FE Petro, Incon, Healy, EBW, Flex-ing, Phil-Tite, UPP, Omntec, Pneumercator, Vaporless, Bravo Systems, CNI, Emco Wheaton, Hirt Combustion, DPM, Western Fiberglass, BJ Enterprises, Brugg Pipesystems, Universal Valve, NOV, Containment Solutions, Rovanco, Nupi, OmegaFlex, Hosemaster, Syntech, EJ Ward, Multi-Force, VST, Husky, OPW, Morrison, PetroClear, Cim-Tek Filtration, Velcon, Groman-Rupp, Relevant Solutions, RCI Technologies, Fill-Rite, GPI, Highland, Pryco, Simplex, Cla-Val, Liquid Controls, Total Control Systems, Riverside Steel, Baker Industries, Granco, PT Coupling, PMP, Clay & Bailey, Dixon Pumps, Krueger Sentry, GIR, Scully, RDM

VEHICLE SERVICE & GARAGE EQUIPMENT: Rotary, Graco, Champion, Forward, Challenger, Direct-Lift, Mohawk, Maha, BendPak, Balcrank, Samson, Lincoln, Alemite, Ingersoll-Rand, Hannay, Devon, Reelcraft, Coxreels, Shure, Equipto, Burroughs, Rousseau, Swisstrax, Justrite, Hunter, GFS, Harvey, JohnDow, Duro, Ammco, Coats, Corgi, Accu-turn, Norco, Robinair, Mattei, Saylor Beall, CompAir, Ingersoll-Rand, Mi-T-M, Amflo, Belanger, NS Wash Systems, PurClean, PDQ, Unitec, Spencer Vacuum, JE Adams, Gray, Raasm

C-STORE EQUIPMENT: Royston, Lozier, Southern CaseArts, Anthony, Manitowoc, Hussman, True, DSA Signage, VeriFone, Gilbarco, Allied Electronics, Gasoline Advertising

ELECTRICAL & LED LIGHTING: LSI, Cree, Solid State Luminaires (SSL), Power Integrity, Carolina Products, Space Saver Distribution (SSDi), EVSE, e-Mobility

CLIENT LIST

MISSION CRITICAL

NAVFAC
US Army Corps of Engineers
Department of Homeland Security
Defense Logistics Agency (DLA)
USMC Camp Pendleton
USMC Miramar
MCLB Barstow
MCB Twentynine Palms
U.S. Navy Base San Diego
U.S. Navy Base Point Loma

COMMERCIAL FLEETS

San Diego International Airport
Los Angeles World Airports (LAWA)
San Diego Unified School District
Port of Long Beach
California Highway Patrol (CHP)
Penske Truck Leasing
LA Metro
San Diego Metropolitan Transit North County
Transit District (NCTD)
CalTrans

Federal Bureau of Investigation (FBI)
Sunline Transit Agency
Orange County Transit District
XPO Logistics
Riverside Transit Agency (RTA)
Osterkamp Trucking
Los Angeles Dept. of Water & Power
San Diego Gas & Electric (SDG&E)
Southern California Edison (SCE)

MANAGEMENT

The management and staff of Western Pump are results oriented and, as such, recognize the importance of clear, focused, and effective communications of ideas, strategies, concepts, and job status in a contractor-client relationship. Western Pump's management approach is to actively involve managers and accompanying teams in all technical and administrative aspects of the specific project, contract, or service, including all scheduling and task-completion duties.

CONSTRUCTION

Our project managers devote a major portion of their work effort toward the development, implementation, and completion of specific tasks. Project managers are also responsible for providing team leadership, security, and quality control; monitoring and review of project schedules and budgets; and maintaining a focused communications relationship with the client. As a result, project managers can represent our clients' best interests by minimizing and mitigating potential problems before they occur, exercising cost containment, reducing and eliminating delays, and identifying and exploring alternative procedures and opportunities.

All project activities and project costs are tracked and recorded weekly into Procore and our computerized database. Time sheets, indirect and direct costs, and budgets are linked to this database for total cost management. Project managers are thus able to respond to and monitor project costs and schedules within any given reporting period.

Western Pump's security and quality control measures and procedures ensure the confidentiality, accuracy, and preservation of all work efforts and data. All project data is backed up daily.

SERVICE

Because of the size of our work force and the geographic areas that we cover, it takes a team of professionals to supervise and direct the daily operations of our service division. Service managers and coordinators are intimately involved with the coordination, scheduling, and dispatching of technicians. Field technical supervisors also work diligently with our team to facilitate troubleshooting efforts, provide technical support, and make timely repairs for our clients.

All field service activities are tracked and recorded in real time through our JONAS Enterprise System. Service orders are transmitted electronically to and from our technicians along with fillable forms, pictures, and other site-specific information and documents. Our state-of-the-art dispatch scheduler and GPS routing capabilities enable us to locate resources, check inventory, and route the right technician for the job. Our compliance technicians utilize JetTrac field inspection software on tablets to streamline the process, ensure accuracy, eliminate human error, and automate the workflow process. These tools, and others, enable us to take excellent care of our clients.

CLIENT TESTIMONIALS

"Western Pump provides us with world-class service in all regards. Timely response, safety, and quality work are top priorities for our facility, and we have always had excellent performance from Western Pump. They have worked with our local inspectors to make sure everything is in order; paperwork, equipment conditions, test procedures have consistently been nearly flawless. We will continue to use Western Pump for all our DUSTO and service work.

- Scott Anderson
CONRAC SOLUTIONS



"Western Pump performed very well. They provided welcome expertise and guidance both on the technical elements as well as permitting. The work was completed safely and with a high level of quality. Western Pump overcame some difficult site conditions and completed the work ahead of schedule. I look forward to the opportunity to work with them again.

- Jacob Thurlow
THE HASKELL COMPANY

ORGANIZATION

Using a project team concept, Western Pump performs and provides services as a full-service one-stop construction and service firm. Western Pump's extensive involvement in the Petroleum Equipment Institute (PEI), Associated Builders and Contractors (ABC), Associated General Contractors (AGC), and other service and construction trade associations has enabled Western Pump to develop the most experienced and qualified team of in-house personnel, external support consultants, and subcontractors available. When a project or contract requires it, support consultants and subcontractors who have previously been part of a successful Western Pump Design/Build or service contract team will be brought into the project as a team member. Over the past seven decades Western Pump's project teams have been involved in or completed over 2,000 commercial, retail, oil, fast food, service station, education, and government projects and contracts.

The knowledge, experience, expertise, and resources available from Western Pump are unequaled. Western Pump selects only qualified, responsible, progressive, and service-oriented staff members and consultants to be part of our team.

During the organization of a project team it is very important to equip the team with only those services and expertise which will be required for a given project. Western Pump's extensive knowledge of the true and accurate scope of services provides the background and information necessary to formulate such a team. Based on the existing clientele of Western Pump, project teams may include, but not be limited to, project architects, project managers, project engineers, land surveyors, civil engineers, landscape architects, mechanical/plumbing engineers, structural engineers, electrical engineers, soils engineers, fire suppression and prevention engineers, environmental engineers and planners, general architects, traffic engineers, asbestos specialists, noise consultants, canopy manufacture engineers, geotechnical engineers, geologists, inspectors, code regulators, and UBC Board members, along with substantial administrative, technical and clerical support personnel.

CLIENT TESTIMONIALS

"Western Pump continually takes on all new projects we present to them with a professional and positive attitude. The technicians that work with Western Pump provide amazing on-site support and service!"

- Loren Shediak, **MARATHON PETROLEUM/SPEEDWAY CORPORATION**

"Western Pump consistently performs quality service and reasonable rates. We consider them a valued partner."

- Drew Flansburg, **MARATHON PETROLEUM/SPEEDWAY CORPORATION**

AWARDS

Outstanding Family-owned Business Award, 2005 – San Diego Business Journal

California's Best Places to Work Award, 2007 – Employers Group and San Diego Magazine

Excellence in Safety & Performance, 2014-2016 – San Diego International Airport Authority

San Diego's Best Places to Work, 2006 – San Diego Business Journal

Outstanding Supplier Recognition Award, 2016 – Tesoro Refining & Marketing

Excellence in Construction Award, 2017 – Associated Builders & Contractors (ABC) San Diego Chapter





Doehrman, a Western Pump Company, is one of the leading vehicle maintenance equipment providers/contractors in the southwest United States. Over the past four decades, Doehrman Company has successfully met the expectations of countless customers in a very diverse marketplace. Our market includes, new car dealerships, paint and body shops, fleet maintenance facilities, transit facilities, school and fire maintenance facilities, Bureau of Reclamation and Department of Defense maintenance facilities, Homeland Defense facilities, state and municipal maintenance facilities, U. S. Postal Service facilities, OEM automakers proving ground facilities, various industrial facilities, national tire and auto store centers, independent garages, quick lube chains and home garages.

Doehrman, a Western Pump Company, is based in Phoenix, Arizona and holds contractors licenses in Arizona (#116045 and #072049), California (#589300) and Nevada (# 0029472). We have completed projects throughout the United States and as far away as the Middle East.

Our staff has hundreds of years of experience in the automotive and vehicle service industry and has contributed in many ways toward setting the standard for state of the art modern shop design. Working closely with facility designers, customers, and equipment manufacturers over the years, we have been able to bring several innovations to the industry that have been incorporated into service facilities nationwide. Some of the new car parts and service facilities we have developed /constructed are recognized as being the best in the world by customers and industry experts alike. We were also involved in helping to develop the standards used in the ALI's (Automotive Lift Institute) lift inspection program which is widely-used across the nation. We, as a company, are very proud of the industry contributions that we've made over the years.

As a recognized leader and authority in our industry we are often called upon to offer expert witness testimony in completed operations, workers compensations, personal injury and wrongful death lawsuits.



SALES

Doehrman, a Western Pump Company, strives to provide one-stop, turnkey solutions to our customers. Our sales professionals bring decades of experience to the sales process and are unsurpassed in our industry.

The following is a list of our capabilities: Automotive, truck, bus and specialty vehicle lifting equipment, compressed air systems and compressor equipment, vehicle exhaust systems, fluid control systems and lubrication equipment, body shop equipment, alignment and wheel service equipment, automotive and industrial spray booths, prep stations and powder coating booths, carwash equipment, parts department mezzanine and storage systems, work benches, workstations and tool storage boxes, above ground fueling systems, underground storage tank removals and upgrades, leak detection and tank monitoring, environmental services including phase one inspections and soil remediation, and a myriad of other automotive shop equipment including storage cabinets, a/c machines, vices, light reels, grinders, key control systems, engine analyzers, battery charging and test equipment, shop coolers and much, much more.

CONTRACTING AND INSTALLATION SERVICES

Doehrman, a Western Pump Company, supplies, installs and services automotive service equipment to a very diverse market. We have extensive expertise in our industry and have developed resources to meet our customers' needs and expectations. From car enthusiasts, home garages, independent and national service and tire centers, to the largest new car dealerships and transit facilities. We offer one-stop turnkey solutions to their shop equipment needs.

Our primary business focus includes outfitting fleet vehicle maintenance facilities, new car dealerships, automotive/industrial spray booth facilities and body shops.

We offer professional CAD and design services and work with our customer's architects and engineers to secure the necessary building permits.

Doehrman, a Western Pump Company, is fully insured and bonded and has a very good safety record. We are fully aware that our safety record is a very important customer consideration in choosing a contractor.

SERVICE DEPARTMENT

Doehrman, a Western Pump Company, has a reputation built on a firm commitment to stand behind every piece of equipment that we sell and install. Customer satisfaction is our primary goal. We maintain a fleet of more than 30 installation and service vehicles and are the warranty service center for most of our equipment providers. Our service techs and installers collectively have hundreds of years of experience and are factory trained in their areas of expertise. We work closely with our vendors to ensure that our personnel have the knowledge and training necessary to safely and properly maintain the equipment we have provided.

In addition, to providing repair services for the lines of equipment we sell, we also offer professional preventive maintenance programs and service contracts for customer's lifts, compressors, car wash and paint booth equipment. We also perform ALL inspections on many of our customers lifting equipment.

RYAN RETHMEIER, President



EDUCATION

Bachelor of Science in Business
University of Phoenix
Business Administration,
Marketing San Diego State University
MAP Management Development Program

ICC CERTIFICATIONS (CA)

UST Installation/Retrofitting
Designated UST System Operator
UST Service Technician
Vapor Recovery System Installation
Vapor Recovery System Testing

MEMBERSHIPS & AFFILIATIONS

Member, Petroleum Equipment Institute
(PEI) Board of Directors Representing
District 9 (2015-2016, 2018-2019)

Committee Member/Co-Author, PEI
Recommended Practices for the
Installation of Marina Fueling Systems
(RP-1000)

Committee Member/Co-Author, PEI The
Entry Level Service Technician Training
Course

Committee Member, PEI Education and
Convention (2017-2019)

Member, The BEST CEO Group

QUALIFICATIONS

As President of Western Pump, Mr. Ryan Rethmeier's professional experience encompasses 26 years of both specialty and general construction, and services. His expertise covers a wide array of projects, services, and clients ranging from governmental (Military, State and Municipalities) to institutions (colleges and school districts) to major corporations and private owners. Mr. Rethmeier has a Bachelor of Science in Business Administration, a California A General Engineering Contractors license, multiple International Code Council (ICC) certifications, and dozens of petroleum equipment manufacturer certifications.

LEVELS OF RESPONSIBILITY

Mr. Rethmeier is responsible for providing management, supervision, and support for all of Western Pump's design, construction, and service efforts, and contractual obligations. Mr. Rethmeier works closely with his key managers and their staff to meet its mission of providing Western Pump's clients with convenience, reliability and peace-of-mind, exceptional customer service, reduced downtime, and cost savings.

GOVERNMENT PROJECT EXPERIENCE

COCO Fuel Services Facilities, Camp Pendleton, CA
MCAS Miramar Auto Service Center, San Diego, CA
MCCS Mini Mall & Fuel Station, Twentynine Palms, CA
Ocotillo Marine Mart, Twentynine Palms, CA
Metro Division 13 Bus Maintenance Facility, Los Angeles, CA
County of San Diego Operations Center, San Diego, CA
SANDAG East County Bus Maintenance Facility, El Cajon, CA
Border Patrol Stations, multiple (Boulevard, Campo, Wilcox, Lordsburg)
Navy Base San Diego Chollas Creek Quaywall Fuel Tank Project
NAS North Island Fuel Dock Modifications
USMC Multiple Site Fuel System Modification
MCAS Miramar Vapor Recovery Phase-II Upgrade

COMMERCIAL and RETAIL PROJECT EXPERIENCE

Sycuan Market, El Cajon, CA
Love's Travel Stops & Country Stores
Westmorland, Kingman, Las Vegas, Gila Bend, Casa Grande, Ripon, Coachella
Flyers Energy Cardlock Facilities
Bakersfield, Banning, Hesperia, Bloomington, San Diego, Ontario, Barstow, Fontana, and more
Tesoro/Adeavor/Speedway, multiple sites (CA)
Pilot/Flying-J #1132, Brawley, CA
Walmart/Sam's Club, multiple sites (CA)
San Diego International Airport Rental Car Center (ConRAC)
Otay International Truck Stop / Truck.Net, Otay Mesa, CA
Del Rey Fuels, Marina Del Rey, CA
Costco Wholesale, multiple sites (CA)
Golden Acorn Casino, Campo, CA
Hollywood/Jamul Casino, Jamul, CA
Chevron Stations, Inc. #207541, San Diego, CA
Lodi Memorial Hospital, Lodi, CA
San Diego Gas & Electric (SDG&E), multiple sites
San Francisco International Airport (SFO), Ground Transportation Unit
ETZ Chayim Congregation, Palo Alto, CA



MICHAEL MIZICKO,

Vice President of Operations



EDUCATION

Computer/Electronics Technologies
Cuyamaca College
Electricians Mate Second Class United
States Navy (Honorable Discharge)
MAP Management Development Program

LICENSES

Responsible Managing Employee (RME),
C10 Electrical Contractor

CERTIFICATIONS

Journeyman Electrician
UST Installation/Retrofitting
Designated UST System Operator
UST Service Technician
Vapor Recovery System Installation
Vapor Recovery System Testing
HAZWOPER & Emergency Response
Confined Space Training

MEMBERSHIPS & AFFILIATIONS

Committee Member/Co-Author, PEI
Recommended Practices for the
Installation of Underground Liquid Storage
Systems (RP-100)

Ad-Hoc Committee Member and Co-Author,
PEI The Service Technician 2nd Level
Training Manual

Member, The BEST Key Group



QUALIFICATIONS

As Vice President of Field Operations for Western Pump, Mr. Michael Mizicko has over 25 years of experience in the Petroleum Industry. His expertise includes not only that of a Journeyman Electrician, but also that of a high-level Fuel Services Technician with in-depth knowledge and understanding of mechanical, electrical, and electronics systems. Mr. Mizicko maintains multiple International Code Council (ICC) certifications, dozens of petroleum equipment manufacturer certifications, and is Western Pump's responsible managing employee (RME) for the California C10 Electrical Contractors license.

LEVELS OF RESPONSIBILITY

Mr. Mizicko, and his team of professionals, are responsible for supervising, managing, and directing the execution efforts of Western Pump's Service and Construction Teams. With his breadth and depth of knowledge, Mr. Mizicko serves as an invaluable resource to both internal and external customers.

GOVERNMENT PROJECT EXPERIENCE

COCO Fuel Services Facilities, Camp Pendleton, CA
MCAS Miramar Auto Service Center, San Diego, CA
MCCS Mini Mall & Fuel Station, Twentynine Palms, CA
Ocotillo Marine Mart, Twentynine Palms, CA
City of San Diego, San Diego, CA
City of Los Angeles, Department of Water & Power (LADWP)
Border Patrol Stations, multiple (Boulevard, Campo, Wilcox, Lordsburg)
Metropolitan Water District (MWD) of Southern California
State of California Department of Water Resources (DWR)
USMC Multiple Site Fuel System Modification
MCAS Miramar Vapor Recovery Phase-II Upgrade
Los Angeles World Airports (LAWA), Los Angeles, CA
Port of Long Beach, Long Beach, CA
Marine Corps Recruitment Depot (MCRD), San Diego, CA

COMMERCIAL AND RETAIL PROJECT EXPERIENCE

Sycuan Market, El Cajon, CA
San Diego International Airport Rental Car Center (ConRAC)
BP/Arco, multiple sites (CA)
Tesoro/Adeavor/Speedway, multiple sites (CA)
Pacific Convenience & Fuels, multiple sites (CA)
United Oil, multiple sites (CA)
Costco Wholesale, multiple sites (CA)
Chevron USA Products, multiple sites (CA)
Morongo Travel Center, Cabazon, CA
Travel Centers of America (TA), multiple sites (CA)
Love's Travel Stops & Country Stores
*Westmorland, Kingman, Las Vegas, Gila Bend, Casa Grande, Ripon,
Coachella, and more*
Walmart/Sam's Club, multiple sites (CA)
Otay International Truck Stop / Truck.Net, Otay Mesa, CA
Del Rey Fuels, Marina Del Rey, CA
Golden Acorn Casino, Campo, CA
Warner Brothers, Los Angeles, CA
Lodi Memorial Hospital, Lodi, CA
San Diego Gas & Electric (SDG&E), multiple sites (CA)
JFK Memorial Hospital, Indio, CA

RYAN SHADBURN,

Vice President of Business Development



EDUCATION

Coursework in Business Administration,
Marketing San Diego State University

MAP Management Development Program

Darren Hardy Business Masterclass
Corlea Group Marketing Program
PEI Young Executives

MEMBERSHIPS & AFFILIATIONS

Petroleum Equipment Institute (PEI)

Associated General Contractors (AGC) of
America San Diego Chapter

Associated Builders & Contractors (ABC)
San Diego Chapter

Tribal Summit Group

Southern California Golf Course
Superintendent Association

Arizona Petroleum Marketers Association

QUALIFICATIONS

As one of Western Pump's sales leaders, Mr. Ryan Shadburn's experience in the petroleum equipment industry spans over 14 years. His knowledge of the rules and regulations (as they pertain to the storage and dispensing of hazardous liquids) coupled with expertise in both retail and commercial petroleum equipment enable Mr. Shadburn to function as a valued resource for our clients.

AREAS OF EXPERTISE

Petroleum Equipment

- Fuel Dispensers
- Underground Storage Tank (UST) Systems
- Aboveground Storage Tank (AST) Systems
- Monitoring Systems
- Vapor Recovery Systems
- Piping Systems
- Submersible Pump Systems
- Point-of-Sale (POS) Systems
- Customer Loyalty Reward Programs
- Lighting Systems
- Fuel Management Systems
- Diesel Exhaust Fluid (DEF) Systems

Regulations

- Air Quality
- Water Quality
- Environmental Protection Agency (EPA)

Services

- Design/Build
- Permitting
- Petroleum Construction (ground-ups, remodels)
- Petroleum Equipment Installation
- Start-up & Initialization
- Compliance Inspections & Testing
- Fixed-Price Service Agreements (FPSAs)
- Service Contracts
- Fuel Cleaning/Polishing

KEY CLIENT LIST

- Love's Travel Centers & Country Stores
- Albertson's / Vons
- Walmart / Sam's Club
- Costco Wholesale
- Pilot/Flying-J
- Phillips 66
- Marathon Petroleum
- Speedway
- United Pacific
- Morongo Band of Mission Indians
- Sycuan Tribal Development Corporation (STDC)
- Tetra Tech
- Weston Solutions, Inc.
- Sea World of California
- United Parcel Service (UPS)



DEREK RETHMEIER, Vice President/Pre Construction

ADDRESS:

3235 F Street San Diego, CA 92102

EMAIL:

derekr@westernpump.com

PHONE NUMBER:

(619)578 - 2187

YEARS OF EXPERIENCE:

22 years

KEY QUALIFICATIONS

- Over twenty-two (22) years of direct experience in Petroleum Equipment and Vehicle Maintenance Facility Construction.
- Broad base of knowledge of the construction process (underground and above ground).
- Expert tradesman, pipe fitter, welder/fabricator, mechanic.
- Top-notch problem-solving skills and attention to details.

CERTIFICATIONS

- RME General B Contractors License Qualifier
- 40-Hour HAZWOPER Safety Certified
- 30-Hour OSHA Construction Safety Certified
- 8-Hour Refresher OSHA
- API Worksafe Certified
- Certified by most major petroleum and automotive equipment manufactures including (but not limited to): Rotary Lift, Graco, Lincoln, Balcrank, Samson, ConVault, Champion Pneumatic, Saylor-Beall, Brugg Pipesystems, Mohawk Lifts, and Containment Solutions
- International Code Council (ICC) - California UST Installation Retrofitting
- International Code Council (ICC) - California UST Service Technician
- International Code Council (ICC) - Vapor Recovery System Installation and Repair
- International Code Council (ICC) - Vapor Recovery System Testing and Repair





DANIEL MILLER, Construction Superintendent

CERTIFIED TRAINING:

Modern Welding
 Xerxes
 Containment Solutions UST
 Bravo Systems UST and sump install
 Veeder-Root Level 4
 Healy Vapor Recovery
 40 hour Hazwopper
 Fork lift/reach fork
 Flex-ing
 NOV Fiber Glass Systems
 Confined Space Training
 CNI EVR Systems
 INCON Fuel Management
 30 hour osha training
 International Code Council (ICC)
 UST Installation/Retrofitting
 Vapor Recovery System installation and repair
 Service technician

EXPERIENCE OVERVIEW

Daniel Miller is our Field General Superintendent with 12 years' experience in construction and 9 years of direct fueling project supervision. Fueling system installation requires the ability to coordinate several of the most complex and risky construction trades simultaneously. Daniel Miller has a proven track record of supervising and completing the most fuel system installations in San Diego and Southern California. Daniel Miller is a certified by the International Code Council (ICC), for UST (Underground Storage Tanks), Vapor Recovery System Installation and Repair, and California UST Service Technician. Other certifications include: Fiber glass systems NOV, Environ Pipe Installer, Omega flex piping, Brugg piping systems, Modern Welding, Xerxes UST, Containment Solutions UST, Bravo Systems UST and sump install, Veeder-Root Level 4 & V/R vapor, INCON level 4 sump tester, 40 hour Haz-whopper/confined space certification weights & measures service agent, 30 hour OSHA training, QA-QC training, Gilbarco safety, CNI, CPR-First Aid, fork lift & reach fork certification, scissor lift and boom lift certification, & fall protection.

RELEVANT PROJECT EXPERIENCE

SWINERTON BUILDERS: Installed 10k containment solutions underground storage tank for diesel with smith fiberglass piping 3' over 2' (2) supply (2) return and (1) vent 2 turbine sumps and fill sump to service the backup generator system at the hospital in Lancaster ca installed complete Incon monitoring system for both tank and piping, installed RCI recirculating fuel polishing unit.

KEVCON: Installed 1k Modern split underground storage tank 540gal diesel 360gal gasoline, Ameron fiberglass piping 3' over 2' Gasboy dispensers 1 pressure 1 suction, for maintenance vehicle fueling at Miramar cemetery installed complete Incon monitoring system for both tank and piping.

MENCO PACIFIC: Installed 10k containment solutions aboveground storage split 7k gasoline 3k diesel tank at NEX 32nd street Naval base for fuel system supply to the floating dock installed Brugg double wall stainless steel continuous piping from tank to fuel dock, installed hose reel with meter on fuel dock for dispensing, installed Omn-tec monitoring system.

AUSTIN/SUNDT JOINT VENTURE: Installed 3 30k Xerxes underground storage tanks, smith fiberglass piping underground 4' over 3', 6' over 3' steel piping welded feeding levels 2 and 3, installed 36 Gas boy dispensers for gasoline with 72 fueling positions 12 dispensers on level 1, 12 on level 2 and 12 on level 3 also installed 15 Belanger car wash's with reverse osmosis system, reclaim pumps reject pumps and spot free pumps at the San Diego International Airport Car Rental Facility.

CLARK CONSTRUCTION: Installed air compressor system and lubrication system with above ground oil tanks, process piping and hose reels at maintenance facility for MTS in El Cajon.

SUNDT/LAYTON: Installed 10k above ground storage tank diesel for backup generator system and 30k above ground LPG tank system for Donovan state prison.

TURNER: Installed 1 car wash brushless system and 1 bus wash brushless system at San Francisco international airport SFO. scheduling, project communication and documentation, and health and safety.

2017	SFO Fleet Maintenance Facility, Lube/Wash/Equip	\$873,565
2016	County of San Diego Fleet Facility, Vehicle Fueling/Lube	\$717,600
2016	Hawthorne Machinery San Diego	\$117,000
2015	San Diego International Airport, Rental Car Return Facility	\$4,500,000
2015	Donovan State Correctional Facility, Large LPG Facility	\$825,000
2015	Division 13 Bus Maintenance Facility LA	\$675,000
2014	MTS San Diego Bus Maintenance Facility, Lube/Piping	\$525,000
2014	29 Palms MCCS Ocotillo Marine Mart	\$543,836
2013	Miramar National Cemetery, Facility Fueling System	\$152,372
2013	San Diego Naval Medical Center, Interior Renovation	\$1,500,000
2013	San Luis Obispo Men's Colony, UST Fuel Facility	\$90,000



John Hendrick, Business Development

QUALIFICATIONS

Having over 13 years in the petroleum industry, Mr. John Hendrick brings his knowledge of equipment, site management and a wholesale petroleum background to our customers. Mr. Hendrick is an experienced sales and operations professional with a track record of proven sales success in petroleum equipment, fleet management software/equipment, capital equipment, maintenance & construction services, EV charging, wholesale fuel, as well as retail store operation and general management. With an operational and technical background, Mr. Hendrick is an adept communicator, collaborator, and negotiator across all levels of organizations.

EDUCATION

Master of Business Administration

Loyola Marymount University

Bachelor of Science

California State University, Chico

SKILLS & ABILITIES

New Business Development
Account Management
Customer Service
Negotiation
Sales Management
Strategic Planning
Operations Management
Project Management
Problem Solving
Marketing
Procurement
Business Analysis

LEVELS OF RESPONSIBILITY

New Client Prospecting
Account Development
Relationship Management
Client Consultation
Scope & Bid Creation
Cross Functional Collaboration

MEMBERSHIPS & AFFILIATIONS

Petroleum Equipment Institute (PEI)
PEI Young Executives

AREAS OF EXPERTISE

Equipment

Fuel Dispensers
Point of Sales Systems
Underground Storage Tank (UST) systems
Aboveground Storage Tank (AST) systems
Monitoring Systems
Automotive Service Equipment

Petroleum Equipment Manufacturers

Gilbarco Veeder Root
Gasboy
Xerxes
Containment Solutions
Franklin Fueling Systems
Bravo Systems
VST
Rotary Lift
Graco

Services

Petroleum Equipment Installation
Compliance & Service Agreements
Service Contracts
Fuel Cleaning/Polishing
Petroleum Construction
Fuel Management System Installation
Fixed-Price Service Agreements (FPSAs)

KEY CLIENT LIST

United Pacific	LAUSD
G&M Oil	LADWP
Jacksons Oil	The City of Pasadena
World Oil	John Wayne Airport
H&S Energy	Sunstate Equipment Rentals
Parkland USA	Kenan Advantage Group
Sysco	Republic Services
The Port of Long Beach	B&T Service Station Contractors
American Golf	Fuel Pros



GREG MCLUCAS, Project Manager

EXPERIENCE OVERVIEW

Mr. McLucas has 40 years of experience in the fuels industry, including system design, construction, inspection, testing, and quality control of systems repair and sustainment activities. He is also experienced in site coordination, operations planning, organization, and successful management. His management experience of POL facilities includes repair of pipelines, and the sustainment, restoration, and modernization (SRM) of associated POL facilities and equipment, such as fuel storage tank inspections, repairs, coatings, testing, system commissioning activities, and maintenance projects. In his role as project manager, he serves as the primary point of contact for the client and is responsible for overall technical, safety, quality, and administrative performance of the TO, including status reporting, financial tracking, scheduling, project communication and documentation. Mr. McLucas is versed at UFGS and submittal requirements and USACE three-phased QC system aimed at preventing deficiencies.

RELEVANT PROJECT EXPERIENCE

CQC Manager, RORE, Inc., USACE Omaha POL MATOC, Various Projects and Locations

Providing quality control management for fuel system repairs, oil water separator, and product recovery tank, including demolition, debris removal, and new construction activities. *Responsibilities:* Develops and submits daily QC reports; inspects all site work to ensure it is implemented in accordance with approved standards and that the QC procedures set forth under the contract are followed; conducts interim inspections; has stop work authority; and inspects completed work to ensure any defects in materials or workmanship are properly identified and corrected in a timely manner; and ensures compliance with performance work statement, Construction QC Plan, Accident Prevention Plan, work plan, and Corporate Quality Management Plan.

Project Manager, Advanced Chemical Transportation, San Jose, CA,

Managed POL construction projects and utilized knowledge of POL systems to communicate and understand technical issues. *Responsibilities:* Oversaw projects for the installation and/or repair of aviation and ground fuels equipment, AST and UST installation and removal, hazardous waste cleanup and disposal, including execution, budget estimating and contract management, status reporting, financial tracking, scheduling, project communication and documentation, and health and safety. Ensured projects completed in accordance with contract requirements and in compliance with local, state, federal, Base, and industry laws, rules, regulations, and standards. Representative POL construction projects include:

NAVFAC, Defense Fuel Support Point (DFSP) Naval Base Coronado and Naval Base Point Loma, San Diego, CA. SOW: Managed emergency repair of the ruptured 8-inch fuel pipeline in accordance with project specifications and drawings. Project included: video camera inspection of the 8-inch carrier and 12-inch containment piping; removal and replacement of approximately 65 feet of 8-inch and 12-inch piping; 100% NDE of all welds; pneumatic testing of new piping; pipe coatings and system commissioning activities.

NAVFAC, Marine Corps Logistics Base (MCLB) Yermo Annex, CA. SOW: Managed the removal of three 12,000-gallon USTs, removal of two underground hoists, removal of 1000 tons of contaminated soil and disposed, backfill and compacted, placed asphalt, and capped excavation with asphalt.

Project Manager, Lemesnager Engineering, San Diego, CA,

Oversaw projects for the installation and/or repair of petroleum equipment, above- and below-ground fuel storage tank installation and removal, hazardous waste cleanup and disposal. *Responsibilities:* Managed project execution, budget estimating and contract management, status reporting, financial tracking, scheduling, project communication and documentation, and health and safety.

TRAINING:

First Aid/CPR/AED, 2018

Blood Borne Pathogens Training, 2018

USACE Construction Quality Management (CQM) for Contractors Certification, 2016

40-hour USACE EM 385 1.1 Training, 2015

OSHA Confined Space Entry Certification, 2013

Modern Welding Tank Investigation Certificate, 2000

Xerxes Tank Installation Certificate, 2000

Red Jacket Master Mechanic and Tank Monitor Certification, 1998

AQMD Rule 461 Gasoline Storage/Dispensing Certification, 1998

ICC UST Operator Certification, 2002

ICC UST Installer/Retrofitting Certification, 2002

ICC Vapor Recovery System Installation and Repair Certification, 2002

OPW EVR Phase I Certification, 2002

Hirt (VCS 100 System, EVR Phase II, EO VR-205), 2002

Meets/Exceeds RFP Requirements:

40 years of experience in the POL Facility industry with 30 years of experience in managing POL construction projects
Knowledge of POL systems sufficient to communicate/understand technical issues.

Current Knowledge of POL Specifications and QA/QC methods, including tank inspection, welding, and installation

Completed CQM for Contractors

NORMA SOTO, Project Manager



OFFICE SKILLS

Contract management/
administration

Preparation and presentation of
relevant reports

Equipment and material
procurement

PROFESSIONAL EXPERIENCE

Norma Soto has over twenty-one of construction project management experience and over six-years of direct experience in Fuel System and Vehicle Maintenance Facility construction. Norma is responsible for planning, organizing, scheduling and coordinating multi-million-dollar fuel storage and distribution construction, facility maintenance, compliance and service projects. Infrastructure development (compliance, construction and service task teams); equipment and material procurement; contract management/administration; preparation and presentation of relevant reports - progress, budget, etc. Norma's extensive technical skills and extremely good organizational and people skills enable her to be an effective project team leader.

COMPLETED PROJECTS

PRIVATE

Hawthorne Machinery Co. – Aboveground Fuel Storage Tank System Installation (New) – San Diego, CA

Escondido Hyundai – Vehicle Service Equipment – Escondido, CA

Golden Acorn Casino – Fuel Dispenser Replacement – Campo, CA

Hawthorne Machinery Co. – Underground Fuel Storage Tank System Removal – San Diego, CA

Flyers Energy – Underground and Aboveground Fuel Storage Tank System Removal – Anaheim, CA

SDG&E – Vehicle Lift Replacement – San Clemente, CA

Morongo Casino – Fuel Dispenser Replacement, Cabazon, CA

Albertsons Co. – Safeway Fuel Center (New) – Hercules, CA

PUBLIC

California Department of Corrections and Rehabilitation – California Men's Colony West Facility Generator System Upgrade – San Luis Obispo, CA

Padre Dam Municipal Water District – Maintenance and Operations Yard Improvement – Santee, CA

South Orange County Community College District – TAS Building Swing Space – Mission Viejo, CA

California Department of Corrections and Rehabilitation – Kern Valley State Prison Underground Fuel System Removal, Aboveground Fuel System Installation (New) – Delano, CA

FEDERAL

MCAS Miramar – Underground Fuel Piping System Replacement – Miramar, CA

USPS – Underground Fuel System Replacement, Aboveground Oil System Replacement Modification – San Diego, CA

MCCS Miramar – Fuel Dispensing System Replacement – Miramar, CA



MATTHEW BODDE, Estimator/Project Manager

EDUCATION

Bachelor of Science,
Geology and Geophysics
University of Missouri, Rolla

CERTIFICATIONS (CA)

UST Installation/Retrofitting
Vapor Recovery System Installation

SKILLS & ABILITIES

Sales Engineering
Plans & Specifications
Equipment Take-offs
Estimates
Scope Writing
Submittals, RFIs
Project Management

QUALIFICATIONS

Mr. Matthew Bodde is an accomplished Estimator/Project Manager with a penchant for solving complex technical problems and extensive civil, mechanical and environmental engineering experience.

Early in Mr. Bodde's career, he worked as a Petroleum Supply Specialist for the United States Army supervising fueling operations, equipment maintenance, and spill containment/cleanup. Mr. Bodde earned a Bachelor of Science Degree in Geology and Geophysics from University of Missouri, Rolla shortly thereafter. Determined to make a name for himself, Mr. Bodde worked his way up the corporate ladders at CTI & Associates, the City of Ann Arbor, the City Tecumseh, and Sperry-Sun Drilling Services. Mr. Bodde also worked as an Instructor for the North Harris County Community College (NHCCC) in Houston, TX where he pioneered and taught NHCCC's first course on Environmental Groundwater.

Mr. Bodde's experience in the Petroleum and Automotive Equipment Industries dates to the early '90s. Mr. Bodde worked as a Project Manager for both Hunt & Hunt Engineering and Perry Williams, Inc. From there, Mr. Bodde joined Western Pump in 1997 where he has become one of our most trusted resources.

AREAS OF EXPERTISE

Fuel Systems & Vehicle Service Equipment

Design, Engineering, Permitting
Scope Writing, Bidding, Estimating o Construction
Project Management

Regulations

Federal, State, County
CUPA, CARB
California Fire Code, NFPA

Geotechnical

Drilling & Groundwater Testing Tools o Geological Surveying
Data Logging
Interpretation

Soils, Concrete, Asphalt

Site Assessments

Corrective Action Plans

Remediation System Design & Installation

Geological Surveying

PROJECT EXPERIENCE

Orange County Transportation Authority (OCTA)
Southern California Edison (SCE) Maintenance Shop
Gardena Transit
LA Police Department Headquarters Maintenance Garage
Olivenhain Municipal Water District (OMWD)
Los Angeles Department of Water & Power (LADWP)
Metropolitan Water District (MWD) of Southern California
Marine Corps Base (MCB) Camp Pendleton
Excel Transportation
San Diego Gas & Electric (SDG&E)
Love's Travel Stops & Country Stores



PROFESSIONAL REGISTRATION

Architect, Arizona License 29559
September 1995

AFFILIATIONS

Roots of Humanity Foundation for the
Arts, 501(c)3 – Co-Founder / Treasurer
(2017-present)

QUALIFICATIONS

Architect-Developer-Entrepreneur with three decades of experience in intelligently planning for and managing the development of approximately 3,000 successful commercial and religious projects throughout the Southwest. At the end of 2017, Greg retired his position as one of the four Principals/Founders of ARCHITEKTON - where he served for more than 28 years. His love of development and assisting others in the planning of financially successful projects is where he has found his greatest satisfaction. Directing the development of beautifully planned projects - that are also financially, environmentally, and contextually successful is where he excels. He is well known in the Southwest for his understanding of the development world and for his abilities to effectively navigate government processes and ensure a smooth and successful project outcome. Greg has become an expert at coordinating large-scale development projects, building programs and complex entitlements.

Since his retirement at the end of 2017, Greg has been able to focus his 30+ years of experience in serving the construction industry and assist those who wish to develop highly successful development projects of their own. He brings his experience on more than 3,000 projects, with a broad range in Commercial, Public, Religious, Mixed Use, Medical and Community Centered projects, as well as a specialty in developing Gas Stations, Travel Centers and Fueling System projects. Greg has always maintained a strong Client Service ethic, and a dedication to assist his clients in achieving excellence in Design Aesthetic, Financial Viability and Project Functionality!

Greg recently served as the managing Architect/Principal for a significant Capstone project - the LDS Temple in Gilbert, AZ. This is a 20-acre masterplan project with multiple prototype buildings and the highest levels of design and detailing - approx. \$100,000,000 in size. Besides utilizing his leadership skills in the Master Planning, Architecture, Utility Coordination and Design-Build assets, Greg utilized the latest computer modeling and 3D Printing systems to develop highly detailed drawings, 3D prints and molds for the actual fabrication of thousands of bronze castings for custom light fixtures, door hardware, stair railings, emblems, crown moldings, and CNC carved decorative woodwork. This technology saved millions of dollars in costs and months of time in the fabrication processes, while providing highly detailed and beautifully ornate fixtures, railings and finish details throughout this once in a lifetime project.

RELEVANT PROJECT EXPERIENCE

Antelope Canyon / Navajo Tours

Visitors Center and Boutique Hotel Projects (Design/Build)

Wild Horse Pass

Retail + Fueling Station for Gila River Indian Community (Design/Build)

Lone Butte Trade Center

Chevron + Tobacco / Gila River Indian Community (Design/Build)

On-Auk-Mor

Tobacco Shops/Chevron Fueling - Salt River Pima Maricopa Indian Community (Design/Build)

Ak-Chin

Gas Station/Retail Development Project Planning

Navajo Nation

Twin Arrows Retail Development Projects (in Construction) (Design/Build)

Santa Rosa Tachi Tribe

Retail & Fueling Development Project

Texaco

1000+ Retail + Fuel Facility + Auto Service / Wash projects, AZ, CA, NV, TX, WA (Design/Build)

Exxon

250+ Retail Fuel Facility Service/Wash projects, AZ, CA, NV, TX, WA

Mobil, Chevron, Shell, Diamond Shamrock, Valero, Tosco, Tesoro, Unocal, AMPM

1000+ Retail + Fuel Facility + Auto Service/Wash projects, AZ, CA, NV, TX, WA

TWENTYNINE PALMS MARINE MART



SCOPE OF WORK

Mini-Mall/C-Store is 5,450-s.f. with Sales Area, Food Station, Restrooms, Office Space, Refrigerated Coolers, Storage, Loading, and Service Areas. The Barbershop is 300-s.f., the Laundromat is 900-s.f., and the Canopy Structure is 3,500-s.f. There are also Underground Storage Tanks (3), Fuel Dispensers (6), and Propane Tank Exchange Station

SERVICES PROVIDED

Architectural Design Engineering
Pedestrian/Vehicular Traffic Flow
Permitting
WebCM Quality Assurance/Quality Control
Grading
Drainage Systems
Environmental Controls
Excavation & Trenching
Fuel System Installation
Monument Sign Installation
Concrete & Asphalt
Exterior & Area Lighting
Landscaping & Irrigation
Walkways and Sidewalks
Furniture, Furnishings, & Equipment
Point-of-Sale System Installation
Regulatory Inspections & Testin
Start-up & Commissioning
Employee Training
OMSI Manuals

GENERAL CONTRACTOR: Western Pump

CONTRACT VALUE: \$4,790,000

PROJECT DESCRIPTION

Design/Build Construction of the MCCS Mini-Mall and Fuel Station, Marine Corps Air Ground Combat Center (MCAGCC) Twentynine Palms, CA. This 7,200-s.f. Mini-Mall Complex consisted of a C-Store, Barber Shop, Laundromat including all utilities and site development, providing a complete and useable facility. The core spaces of the C-Store are the sales area, food station, wine and liquor section, video/DVD rental, restrooms, office space, refrigerated coolers, storage, loading, and service areas. The building footprint also included a separate Barber Shop and a Laundromat.

The Fuel Station for this project included a 3,500-s.f. Canopy Structure to provide covering for two (2) islands with six (6) Multi-Product Dispensers (MPDs), three (3) 20,000-gallon Underground Storage Tanks (USTs), a Monument Price Sign, a 3-Terminal Point-of-Sale (POS) System, and a Tank and Continuous Monitoring System.

CHALLENGES & RESOLUTIONS

Western Pump's design/build team worked closely with all project stakeholders to meet all project requirements while staying within the cost limitation (\$4,900,000). To accomplish this, a concept design workshop (CDW) was conducted to coordinate the design elements, examine project functions and requirements, quality and life safety costs, analyze alternate design concepts, expose and resolve project issues, and develop the final conceptual design.

This collaborative effort resulted in a state-of-the-art facility built to comply with California's stringent regulations including Phase-I and Phase-II Enhanced Vapor Recovery (EVR), and Assembly Bill 2481 (AB-2481).



LOVE'S TRAVEL STOP #749 (Westmorland, CA)



GENERAL CONTRACTOR

Western Pump

CONTRACT VALUE

\$2,200,000

SERVICES PROVIDED

Fuel System Permitting
Excavation & Trenching
Engineered Slide Rail Shoring Embeds
Pipe Supports
Tank Installation
Fiberglass Piping Installation
Black Iron Steel Piping Installation
Submersible Pump Systems
Centrifugal Pump Systems
Secondary Containment
Fuel System Electrical
Tank Monitoring System
Tank Pad Installation
Drive Slab Installation
Flow Meter Calibration
Decals & Signage
Start-up & Initialization
Regulatory Inspections
Compliance Testing
Record Drawings
Operation & Maintenance Manuals
Close-out Documentation

OWNER CONTACT

Love's Travel Stops & Country Stores
Chris Cummings
Supervisor of Fuel Projects
Chris.Cummings@loves.com
(405) 208-9590



PROJECT DESCRIPTION

The new Love's Travel Stop & Country Store located in Westmorland, CA. Western Pump was selected to construct the Fueling Systems for this project. Scope of work included all mechanical and electrical control systems, conduits, and wiring for the installation of a large auto and truck stop facility. Project included four (4) Underground Storage Tanks (USTs), four (4) Aboveground Storage Tanks (ASTs) with underground piping and electrical for thirty-four (34) fuel positions under two Canopies.

PROJECT FEATURES

Four (4) 30,000-gallon Underground Storage Tanks (USTs) with Deadmen Anchoring Systems
One (1) 6,000-gallong Oil/Water Separator
Four (4) 12,000-gallon Aboveground Storage Tanks (ASTs)
One (1) Tanker Truck Unloading Station
Six (6) 10-HP self-priming centrifugal Pump/Motor Assemblies
Eight (8) Submersible Pump Systems
One (1) Junge Biodiesel Blend System
Seventeen (17) Under-Dispenser Containment (UDC) Sumps
Seventeen (17) Metal Island Forms
Nine (9) Multi-Product Fuel Dispensers in the Auto Fueling Area
Eight (8) High-Flow Diesel Dispensers in the Truck Fueling Area
Three (3) Remote Diesel Fill Stations
Product/Vapor/Vent Piping Systems (above and below ground)
Fuel Management, Leak Detection, and Monitoring Systems
In-Station Diagnostics (ISD) System

SYCUAN MARKET (El Cajon, CA)



OWNER CONTACT

Sycuan Tribal Development
Corporation
Sid Morris, Director
smorris@sycuan-nsn.gov
(619) 445-4564

SCOPE OF WORK

Ground-up Construction
5,450-s.f. C-Store
1,550-s.f. Tenant Space
6,180-s.f. Canopy Structure
Covered Patio Area
Drive-through Tobacco Sales
Quick Service Restaurant
Beer Cave
Walk-in Freezer & Cooler
Point-of-Sale (POS) Equipment
Underground Storage Tanks (USTs)
Eight (8) Fuel Dispensers
Monument Price Sign

GENERAL CONTRACTOR: Western Pump

CONTRACT VALUE: \$4,800,000

PROJECT DESCRIPTION

The Sycuan Market opened in October of 2019 and is a 5,450-s.f. C-Store with state-of-the-art amenities including a grab and go food service area, walk-in freezer, refrigerated cooler, soda and cold drink beverage counter, hot beverage counter, refrigerated merchandise displays, drive-through tobacco sales window, beer cave, office, restrooms, storage room, IT room, and covered patio area. In addition to this, there is a 1,550-s.f. tenant space area for future use and/or expansion.

The fuel system and forecourt area consist of eight (8) Multi- Product Dispensers (MPDs) offering three grades of gasoline and diesel fuel under a 6,180-s.f. decorative canopy. Five (5) Underground Storage Tanks (USTs) hold 30,000-gallons of 87- Octane Gasoline, 20,000-gallons of 91-Octane Gasoline, 20,000- gallons of Diesel Fuel, 600-gallons of Gasoline Additive, and 600-gallons of Diesel Additive.

The facility was a collaborative design/build project offering high-end reliable equipment with an environmentally sensitive approach. Despite that the facility is located on Tribal Land, Sycuan Tribal Development Corporation required that all aspects of the facility were designed and built to comply with California's most stringent regulations including federal, state, and local building and fire, and air quality.



SDIA RENT-A-CAR CENTER (San Diego, CA)



OWNER CONTACT

San Diego County Regional
Airport Authority
Brian Lahr, Construction Manager
blahr@san.org
(619) 400-2405

SERVICES PROVIDED

BIM Drawings
BIM Coordination
Excavation & Trenching
Engineered Slide Rail Shoring
Dewatering
Embeds
Pipe Supports
Seismic Restraints
Tank Installation
Piping System Installation
Manifold Valving Systems
Secondary Containment Systems
Submersible Pump Systems
Fuel System Electrical
Tank Monitoring System
Fuel Management Systems
Tank Pad Installation
Car Wash Electrical
Car Wash Installation
Regulatory Inspections
Compliance Testing
Start-up & Initialization

GENERAL CONTRACTOR

Austin | Sundt JV
Brad Kirsch, Project Director
bskirsch@sundt.com
(619) 572-2711



SUBCONTRACT VALUE: \$4,250,000

PROJECT DESCRIPTION

The new consolidated rental car center (CONRAC) at the San Diego International Airport is a massive two-million square-foot structure that houses 16 rental car companies, a customer service building, a quick-turn-around car prep facility and a 5,400-car ready/return area. Western Pump was selected to construct the Fueling and Car Wash Systems for this project. Both scopes of work include the mechanical and electrical control systems, conduits, and wiring.

CHALLENGES & RESOLUTIONS

One of the challenges on this project included a high-water table in the area of the tank pit excavation. Western Pump worked with its subcontractors to excavate, shore, dewater, test, and filter the water prior to proper discharge into the City's sewer system. Also, this multi-level Fuel System will be a first one of its kind in the County of San Diego. As such, Western Pump has worked diligently with the County of San Diego Department of Environmental Health Hazardous Materials Division (HAZMAT) to phase the required inspections so that the project schedule could be kept on track.

PROJECT FEATURES

Three (3) 25,000-gallon Underground Storage Tanks (USTs)
Twelve (12) 4-HP Variable Speed Submersible Pump Systems
Thirty-six (36) Fuel Dispensers (72 fueling positions)
Double-wall Fiberglass Underground Piping Systems
Double-wall Steel Aboveground Piping Systems
Fuel Management, Leak Detection, and Monitoring Systems
Fifteen (15) Car Wash Systems

DESIGN/BUILD FUEL SERVICES FACILITIES, (Camp Pendleton, CA)



OWNER CONTACT

Defense Logistics Agency (DLA)
Monica Fass, Contracting Officer
monica.fass@dla.mil
(703) 767-9335

SERVICES PROVIDED

Design Assistance
Permitting
Engineered Shoring
Excavation & Trenching
Dewatering
Canopy Footings
Canopy Installation
Tank Installation
Electrical Installation
Secondary Containment
Piping System Installation
Submersible Pump Systems
Enhanced Vapor Recovery (EVR)
Fuel Management Systems
Fuel System Electrical
Building & Area Lighting
Start-up & Initialization
Enhanced Leak Detection Testing
Compliance Testing
Inspections

GENERAL CONTRACTOR

WILLBROS Government Services
Rick Grossman, Vice President
rgrossman@trcsolutions.com
(918) 629-7700

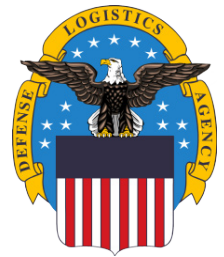
SUBCONTRACT VALUE: \$4,950,000

PROJECT DESCRIPTION

Design and construction of six (6) automated fuel facilities to provide retail fuel services (JP-8, B-20, E-85, Mogas), and daily bulk fuel services (JP-8 and B-20) 24-hours a day, 365- days a year. After completion of construction, WILLBROS Government Services will operate and maintain the facilities for up to twenty (20) years. All sites are built to handle vehicles up to 60-tons.

SCOPE OF WORK

As a subcontractor to WILLBROS, Western Pump constructed six (6) new contractor-owned contractor-operated (COCO) fueling facilities at MCB Camp Pendleton, CA to provide unleaded gasoline, biodiesel, and E-85 to military vehicles. This included twenty-five (25) Underground Storage Tank (UST) Systems, twenty-four (24) submersible pump systems, six (6) fuel island canopy structures, eighteen (18) fuel dispensers, six (6) monitoring systems, six (6) vapor recovery systems, six (6) fuel management systems, and three (3) bulk loading racks. Western Pump self-performed the following tasks: fuel system permitting, excavation, shoring, soil disposal, dewatering, tank installation, backfilling, compacting, canopy footings, trenching, product piping, vapor piping, fuel system electrical (above and below ground), submersible pump installation, fuel dispenser installation, monitoring system installation, Phase-I and Phase-II vapor recovery system installation, fuel management system installation, canopy lighting electrical, fuel system pre-testing and final testing, certification, start-up and initialization of equipment with certified technicians, meter calibration, employee training, and clean-up.



OCOTILLO MARINE MART (Twentynine Palms, CA)



SERVICES PROVIDED

Architectural Design
Engineering Traffic Control
Permitting
Cleaning, grubbing, removal
Rough grading
Storm Water Pollution Prevention
Asphalt, Concrete Paving
Curb & gutter
Water service
Sanitary Sewer
Site electrical
Landscaping and hardscape
Slab on grade
Masonry
Structural steel
Carpentry
Thermal & moisture protection
Automatic entrance systems
Exterior glazing & storefront framing
Interior glazing
Gypsum wallboard
Acoustical ceiling systems
Exterior security screen/fencing
Domestic water piping
Fire protection
Site lighting

GENERAL CONTRACTOR: Western Pump

CONTRACT VALUE: \$2,950,000

PROJECT DESCRIPTION

Design/Build Construction of the MCAGCC Ocotillo Marine Mart, Marine Corps Air Ground Combat Center (MCAGCC) Twentynine Palms, CA. Western Pump designed and built the Fuel System for this project which consisted of two (2) 12,000-gallon Aboveground Storage Tanks (ASTs), two (2) Multi-Product Fuel Dispensers, a 2- Column Canopy Structure with LED Lighting, a Monument Price Sign, a 1-Terminal Point-of-Sale (POS) System, and a Tank Monitoring System. In addition to this, Western Pump self-performed the entire site electrical, concrete, plumbing, HVAC, fire alarm, and roofing scopes of work.

CHALLENGES & RESOLUTIONS

Design and engineering was underway for an Underground Storage Tank (UST) System; however, the end user changed its mind and decided in favor of an Aboveground Storage Tank (AST) System instead. Western Pump worked diligently with its design consultant to completely switch gears and deliver the project drawings on time. Once the design was completed, Western Pump then had to re-quote the project accordingly. Negative cost impacts were substantially minimized by working together to value engineer (VE) the fuel system without sacrificing quality. Unified Facilities Criteria (UFC) requirements were also adhered to in order to comply with mission critical facility standards.

SCOPE OF WORK

Marine Mart, 4,200-s.f.
Fueling Station, 1,900-s.f.
Auto and Motorcycle Parking
Pedestrian Access Sidewalk
Exterior Building Signage
On-grade auto & motorcycle parking
Site pavement and markings
Pedestrian access sidewalk improvements

Exterior Building signage
Landscaping
Self-service air compressor & water Fueling Station
Aboveground Fuel Storage Tanks
Vapor Recovery System
Refuse and recycling enclosures

PILOT FLYING J TRAVEL CENTER (Brawley, CA)



POINTS OF CONTACT

Brandon Parks, Director of
Construction at Pilot Flying J
Brandon.Parks@pilottravelcenters.com
(865) 474-3973

SERVICES PROVIDED

Excavation & Trenching
Tank Installation
Secondary Containment
Piping System Installation
Submersible Pump Systems
Enhanced Vapor Recovery
Dispenser Installation
Start-up & Initialization
Enhanced Leak Detection Testing
Compliance Testing
Inspection

CLIENT

Pilot Flying J

CONSTRUCTION COST: \$600,000

PROJECT DESCRIPTION

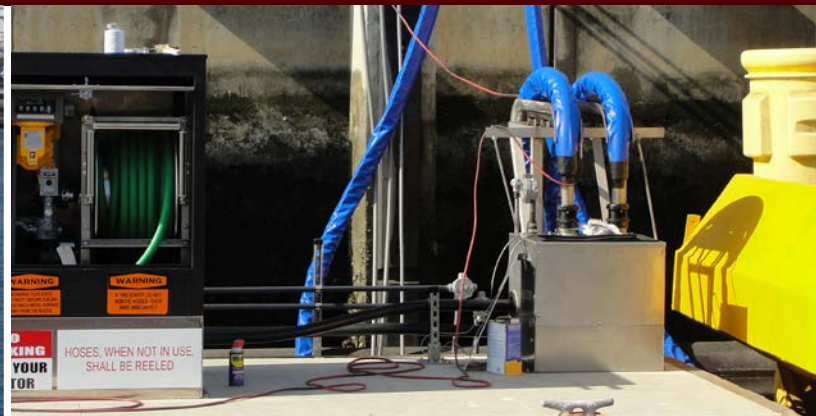
The Pilot Flying J Fuel System Install was completed in January of 2019. Western Pump was selected to construct the Fueling Systems for this project. The scope of work included all mechanical and electrical control systems, conduits, and wiring for the installation of an auto and truck stop facility located in Brawley, CA. The project included the installation of two (2) Underground Storage Tanks (USTs) and four (4) Aboveground Storage Tanks (ASTs) with underground piping and electrical for (24) fuel positions under two canopies.

PROJECT FEATURES

Two (2) Underground Storage Tanks (UST's) (25,000 gallons and 12,000 gallons)
Four (4) 12,000 gallon Aboveground Storage Tanks (AST's)
One (1) 4,000 gallon Oil Water Separator (OWS)
Tank top equipment, product piping (diesel, gas, and DEF), and vapor piping
Fuel, DEF, and OWS system vent piping
Seven (7) UST & OWS sumps
Three (3) pipe transition sumps
Twelve (12) Under Dispenser Containments (UDCs)
One (1) remote fill diesel fill station
Fuel and DEF aboveground piping
Twelve (12) fuel dispensers and hanging hardware

CHOLLAS CREEK QUAYWALL FUEL TANK PROJECT

(Naval Base San Diego, CA)



GOVERNMENT CONTACT

Philip Goodman, Project Manager
COMNAVREG SW Port Operations
philip.i.goodman.ctr@navy.mil
(619) 556-3659

SCOPE OF WORK

Design/Build
Marina Fuel Facility (MFF)
Aboveground Storage Tank (AST)
Fuel Dispensing Systems
Electrical

SERVICES PROVIDED

Design & Engineering
Permitting
Demolition, Removal & Disposal
Excavation & Trenching
Piping System Installation
Class-I Division-I &-II Electrical
Monitoring System
Compliance Testing
Flow Meter Calibration
Inspections
Project Close-out

GENERAL CONTRACTOR

Menco Pacific, Inc.
Craig Halverson, Project Manager
chalverson@menco-pacific.com
(760) 747-4405



SUBCONTRACT VALUE: \$450,000

PROJECT DESCRIPTION

This design/build Marina Fuel Facility (MFF) Project included installing a 10,000-gallon two-compartment Aboveground Storage Tank (AST) at the Quaywall and double-wall Piping Systems down to a floating dock for gasoline and diesel fuel dispensing into small craft vessels. The Department of Defense's (DoD) Unified Facilities Criteria (UFC) requirements for petroleum fuel facilities were adhered to along with California Air Resource Board (CARB) Phase-I Enhanced Vapor Recovery (EVR) for ASTs.

CHALLENGES & RESOLUTIONS

The most significant challenge with this project was designing the piping systems to accommodate for the tidal fluctuations (minus 4-feet to plus 8-feet). This was accomplished through collaboration and teamwork with the piping system manufacturer, OmegaFlex, to custom-design piping systems and cradles to hold the double-wall dock connectors in a safe manner during the rise and fall of the tides.

PROJECT FEATURES

UL-2085 Listed 10,000-gallon Aboveground Storage Tank (AST) for Gasoline and Diesel Fuel
Leak Detection & Monitoring System
Double-wall Stainless Steel Flexible Product Piping Systems with Corrosion Protection
Marina Fuel Dispensers with Enclosures for Hose Reels

DELUXE AUTO CARRIERS INC. (Jurupa Valley, CA)



SERVICES PROVIDED

Fuel System Design & Engineering
Fuel System Permitting
Procure Equipment
Canopy Installation
Tank Installation
Piping Installation
Pump Systems
Fuel System Electrical
Tank Monitoring System
Fuel Management System
DEF System
Tank Pad Installation
Drive Slab Installation
Flow Meter Calibration
Crash Protection
Decals & Signage
Start-up & Initialization
Regulatory Inspections
Record Drawings
Operation & Maintenance Manuals
Close-out Documentation

GENERAL CONTRACTOR: Western Pump

OWNER

Deluxe Auto Carriers Inc.
Jesse Holguin, President
jesse@deluxeac.com
(909) 746-0900

CONTRACT VALUE: \$400,000

PROJECT DESCRIPTION

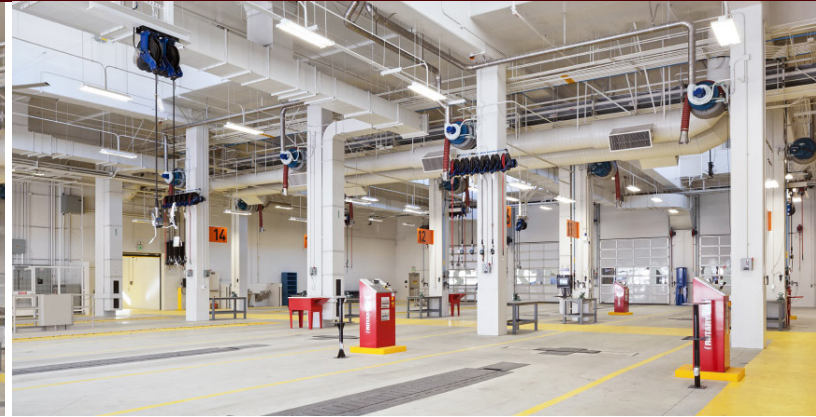
The new Deluxe Auto Carriers located in Jurupa Valley, CA. Western Pump was selected to design and construct the Fueling Systems for this facility. Scope of work included all design, engineering, mechanical and electrical control systems for the installation of a commercial trucking fuel facility. Project included one (1) Aboveground Diesel Storage Tank, one (1) Aboveground DEF Storage Tank with piping and electrical under a 30' x 57' Cantilever Canopy.

PROJECT FEATURES

One (1) 12,000-gallon Aboveground Storage Tank (AST)
One (1) 4,000-gallon DEF Tank
Two (2) Submersible Pump Systems
Two (2) Under-Dispenser Containment (UDC) Sumps
One (1) DEF Dispenser with Stainless Steel Piping
One (1) High-Flow Diesel Dispenser Two (2) Remote Fill Stations
Fuel Management
Leak Detection and Monitoring Systems
LED Lighting
Commercial Vacuum

DELUXE
AUTO CARRIERS

METRO DIVISION 13 BUS MAINTENANCE FACILITY (Los Angeles, CA)



SCOPE OF WORK

BIM Coordination
Vehicle Service Equipment
Aboveground Storage Tanks
Process Piping Systems
Compressed Air System

SERVICES PROVIDED

BIM Drawings
BIM Coordination
Piping System Installation
Inspections
Project Close-out

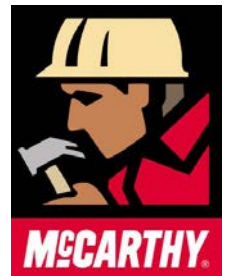
PROJECT FEATURES

Containment Solutions
Aboveground Storage Tanks (ASTs)
Balcrank Pneumatic Pump Systems
Graco Hose Reel Banks
Champion Air Compressors
TransAir Piping Systems

GENERAL CONTRACTOR

McCarthy Building Companies
Khatchig Tchapidarian Project Director
KTchapidarian@McCarthy.com
(949) 466-9770

SUBCONTRACT VALUE: \$800,000



PROJECT DESCRIPTION

The new LA Metro Division 13 Bus Maintenance and Operations Facility stands as one of the most advanced transit facilities in the nation. It includes a maintenance facility with 19 service bays for Metro's growing fleet and employee parking for 382 vehicles. As a subcontractor to McCarthy Building Companies, Inc., Western Pump was responsible for providing and installing vehicle service equipment, process piping systems, compressed air equipment, and compressed air piping systems.

CHALLENGES & RESOLUTIONS

Coordination of subcontractor trades is never easy, especially in a facility this complex. McCarthy's Project Execution Team implemented the use of Building Information Modeling (BIM) to accomplish this task. Western Pump participated in regular BIM coordination meetings to help identify conflicts prior to work being performed on-site during construction. A significant amount of time and money was saved, and a higher quality of work was produced by all subcontractors that were involved in this process.

BROWN FIELD BORDER PATROL STATION (Dulzura, CA) - Currently Under Construction



SERVICES PROVIDED

Vehicle Service Equipment Distribution
Fuel System Equipment Distribution
Tank Installation
Automotive Equipment Installation
Piping Installation
Fuel Dispenser Installation
Fuel Management System Installation
Fuel System Electrical
Start-Up & Initialization
Regulatory Inspections
Close-out Documentation

GENERAL CONTRACTOR: Western Pump

PROJECT DESCRIPTION

The Brown Field Border Patrol Station located in Dulzura, CA is in progress and nearing completion. The scope of work includes the installation of vehicle service equipment, an aboveground fuel system, fuel system electrical, and start-up and commissioning.

PROJECT FEATURES

Three (3) 240-gallon Double-Wall UL-142 Oil Tanks
One (1) 480-gallon Double-Wall UL-142 Oil Tank
One (1) Waste Oil Receiver
One (1) Waste Coolant Receiver
Six (6) Hose Reels
Three (3) Aboveground Two-Post Lifts
One (1) Four-Post Alignment Rack
One (1) Tire Changer
One (1) Tire Balancer
One (1) Work Bench Storage Combo
Two (2) 12,000-gallon UL-2085 Aboveground Storage Tank
One (1) 8,000-gallon UL-2085 Aboveground Storage Tank
Eight (8) Single-Hose Gasoline Dispensers
Two (2) Single-Hose Diesel Dispensers
Ten (10) Aboveground Conversion Frames
One (1) HIRT Vapor Recovery Burner System
Five (5) Fuel Management Systems
One (1) Tank Monitor and Leak Detection System
Fuel System Electrical
Testing, Start-Up, and Commissioning

LEGOLAND FUEL FACILITY (Carlsbad, CA)



SERVICES PROVIDED

- Tank Installation
- Piping Installation
- Fuel Dispenser Installation
- Fuel Management System Installation
- Start-Up & Initialization
- Regulatory Inspections
- Close-out Documentation

GENERAL CONTRACTOR: Western Pump

PROJECT DESCRIPTION

The LEGOLAND Fuel Facility is located in Carlsbad, CA. The scope of work included the installation of an aboveground fuel system and fuel management system.

PROJECT FEATURES

- One (1) 4,000 Gallon Aboveground Storage Tank (AST) w/ tank top equipment
- Two (2) Tank Mounted Dispensers
- One (1) Retractable Hose Reel
- Two (2) Interstitial Leak Detectors
- Two (2) Level Transmitters
- One (1) Control Panel
- One (1) Fuel Management System
- Testing, Start-Up, and Commissioning
- Services Provided:
 - Tank Installation
 - Piping Installation
 - Fuel Dispenser Installation
 - Fuel Management System Installation
 - Start-Up & Initialization
 - Regulatory Inspections
 - Close-out Documentation

SEA WORLD MAINTENANCE FACILITY (San Diego, CA)



SERVICES PROVIDED

- Permitting
- Fuel System Equipment Distribution
- Tank Removal
- Tank Installation
- Piping Installation
- Fuel Dispenser Installation
- Fuel Management System Installation
- Tank Monitor Installation
- Fuel System Electrical
- Start-Up & Initialization
- Regulatory Inspections
- Close-out Documentation

GENERAL CONTRACTOR: Western Pump

PROJECT DESCRIPTION

The SeaWorld Maintenance Facility underground storage tank replacement project located in San Diego, CA was completed in January of 2021. The scope of work includes permitting, petroleum dispensing equipment, an underground fuel system, a fuel management system, a tank monitoring system, fuel system electrical, and start-up and commissioning.

PROJECT FEATURES

- Department of Environmental Health and Local Fire Permits
- One (1) 10,000-gallon AB-2481 Double-Walled Underground Storage Tank
- One (1) Twin-Hose Twin Product Gasoline/Diesel Dispenser
- One (1) Fuel Management Systems
- One (1) Tank Monitor and Leak Detection System
- Fuel System Electrical
- Testing, Start-Up, and Commissioning

LOVE'S TRAVEL STOP & COUNTRY STORE (Bliss, ID)



SERVICES PROVIDED

Fuel System Design & Engineering
Fuel System Permitting
Procure Equipment
Canopy Installation
Tank Installation
Piping Installation
Pump Systems
Fuel System Electrical
Tank Monitoring System
Fuel Management System
DEF System
Tank Pad Installation
Drive Slab Installation
Flow Meter Calibration
Crash Protection
Decals & Signage
Start-up & Initialization
Regulatory Inspections
Record Drawings
Operation & Maintenance Manuals
Close-out Documentation

GENERAL CONTRACTOR: Western Pump

PROJECT DESCRIPTION

The Love's Travel Stop & Country Store located in Bliss, ID was completed and opened up its doors on December 17th. The scope of work included excavation and trenching, installation of the auto and diesel fueling areas, installation of the auto and diesel forecourt, all piping systems, installation of the monitoring system, all the fuel system electrical and testing, start-up, and commissioning of the site.

PROJECT FEATURES

Six (6) Underground Storage Tanks (USTs)
Underground piping and electrical
Twentyfive (25) fueling points
Nineteen (19) fueling dispensers
Two (2) canopies
Two (2) Multi-Compartment Underground Lube Tanks
Ten (10) Medium Pressure Oil Pumps
One (1) Grease Pump
One (1) Waste Oil Pump
Aboveground Product Pipe

QUIKTRIP 489 (Casa Grande, Arizona)



SERVICES PROVIDED

- Saw cut, breakout, remove concrete
- Tank Installation
- Piping Installation
- Fuel Dispenser Installation
- Tank Monitoring System Upgrade
- Drive Slab Installation
- Flow Meter Calibration
- Start-Up & Initialization
- Regulatory Inspections
- Close-out Documentation

GENERAL CONTRACTOR: Western Pump

PROJECT DESCRIPTION

The QuikTrip Store located in Casa Grande, Arizona is currently under construction and will be pushing to open soon! The scope of work included excavation, trenching, backfill, fuel system installation, testing, start-up, and commissioning.

PROJECT FEATURES

- Five (5) 15,000 Gallon Underground Storage Tanks (UST)
- Five (5) single-walled, turbine tank sump
- Ten (10) Gilbarco Encore 700s
- Underground Pipe Installation
- Back Fill Tank and Pipe Excavation
- Tank Monitoring System Equipment
- Testing, Start-Up, and Commissioning